



普傑國際股份有限公司

PROFESSOR TECHNOLOGY CO., LTD.

PRODUCT SPECIFICATION

產品承認書

Customer: _____

Product Name: **5.1 Channel Surround Headphone.**

Model No: **CP5.1-XBox/Live**

Production Region: **China**

Version: **English**

Customer Approval Stamp.

Date: ___ / ___ / ___.

Contact Info: Jimmy Chan
+886-3-4551081 ext:209
jimmychan@professor.com.tw
jack@professor.com.tw

Model No:

CP5.1-XBox/Live

Date:

30/Nov/2004

Checked by:

Approved by:

PROFESSOR TECHNOLOGY CO., LTD.

5F, No.25-1, JiLin Rd., Chung-Li Industrial Park, Taoyuan 320, Taiwan.

TEL :+886-3-4551081 FAX :+886-3-4553913

Specification 規格

Part	Description	Qty.	
1.	Driver	Front: 27mm Dynamic Speaker 32 Ohm 150mW	2
		Rear: 27mm Dynamic Speaker 32 Ohm 150mW	2
		Center: 27mm Dynamic Speaker 32 Ohm 100mW	2
		Bass: 30mm Dynamic Speaker 24 Ohm 15mW	2
2.	Processor	Input: AC100~240V 50/60Hz ; Euro type Plug Output: DC+5V 1A	1
3.	Headphone type	Closed Air type.	
4.	Cable & Connector	Cord Length: 240 cm	
		Connector: Rca plug (right) red color.	1
		Rca plug (left) white color.	1
		Accessories : Double-side Rca Jack (white)	1
		Double-side Rca Jack (red)	1
5.	Weight	Gross Weight: 710 g (include accessories and package) Net Weight: 473 g (only headphone)	
6.	Package type	Blister	
7.	Power Supply	Input: AC100~240V 50/60Hz ; US type Plug Output: DC+5V 1A DC plug: OD=5.5mm ID=2.7mm	
8.	Mircophone	Size: \varnothing 6 mm x 5mm Sensitivity: -62 \pm 2dB	1

Cosmetic List 外觀圖清單



Power Supply



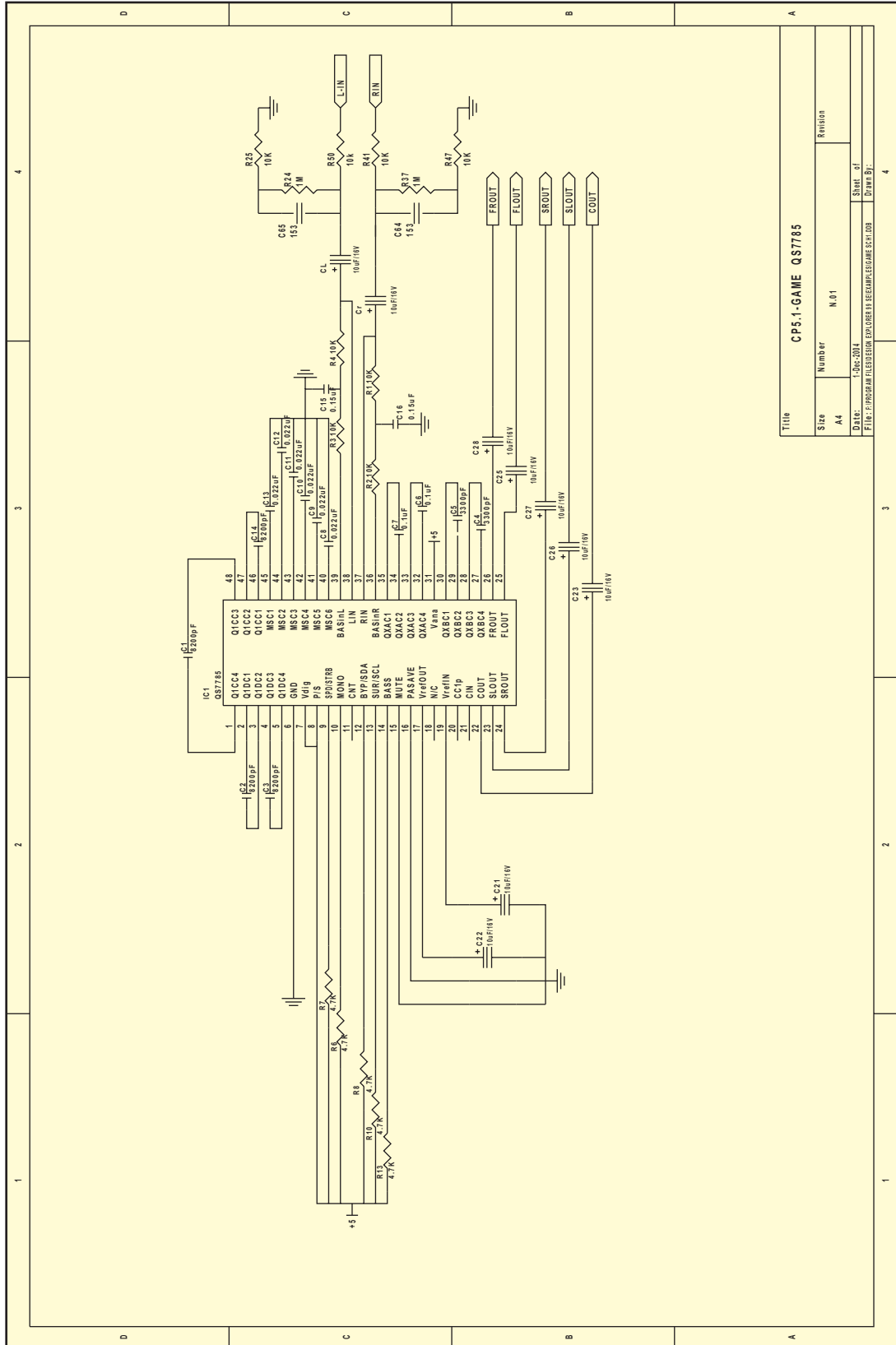
1. Headphone
2. Control Box (Processor) with Volume control.
3. RCA Plug (right)
4. RCA Plug (Left)
5. DC Jack
6. Microphone
7. Mic. Plug ($\varnothing 2.5\text{mm}$)



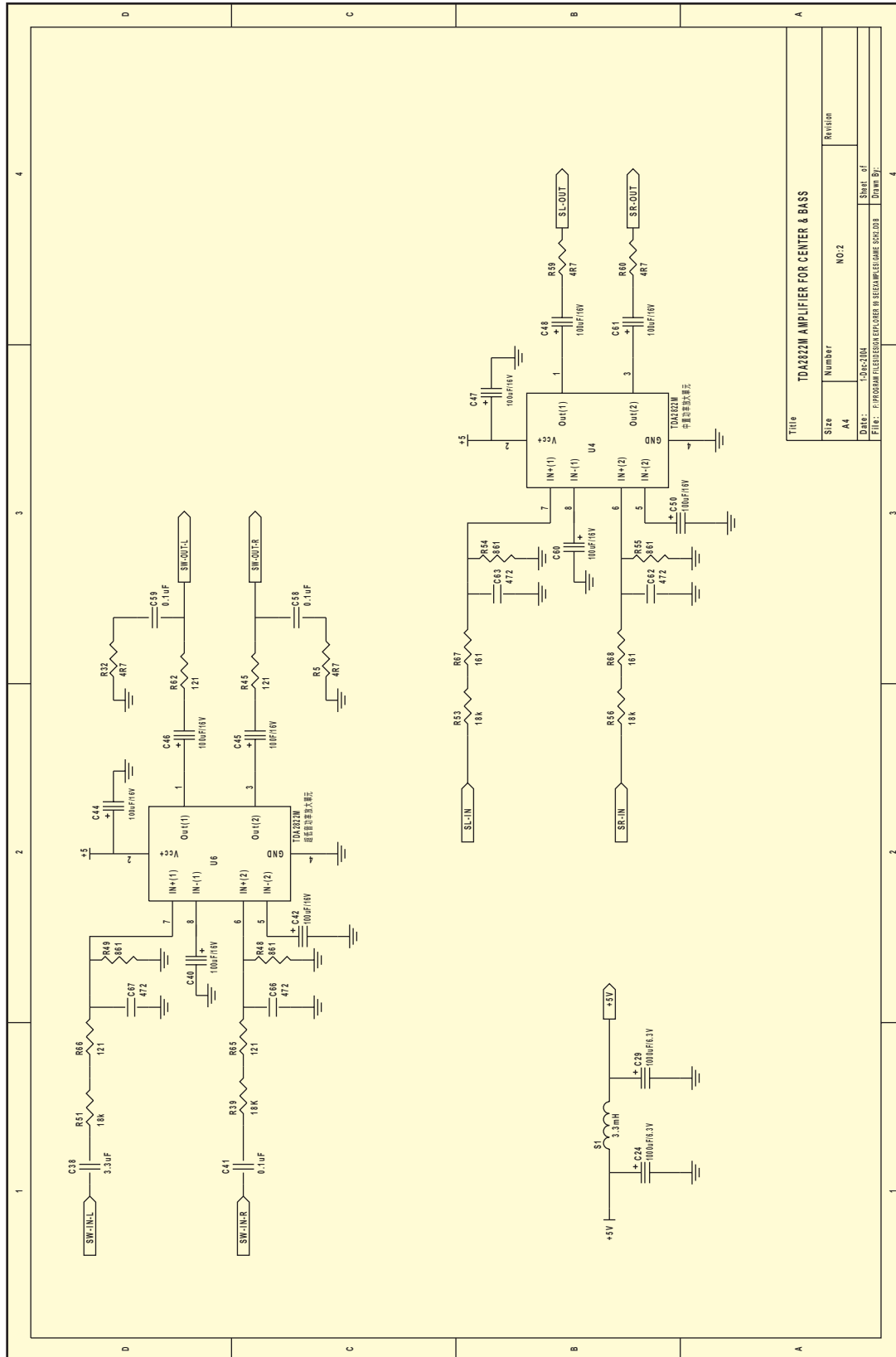
1. Double-side RCA Jack (red)
2. Double-side RCA Jack (white)

Circuit Diagram

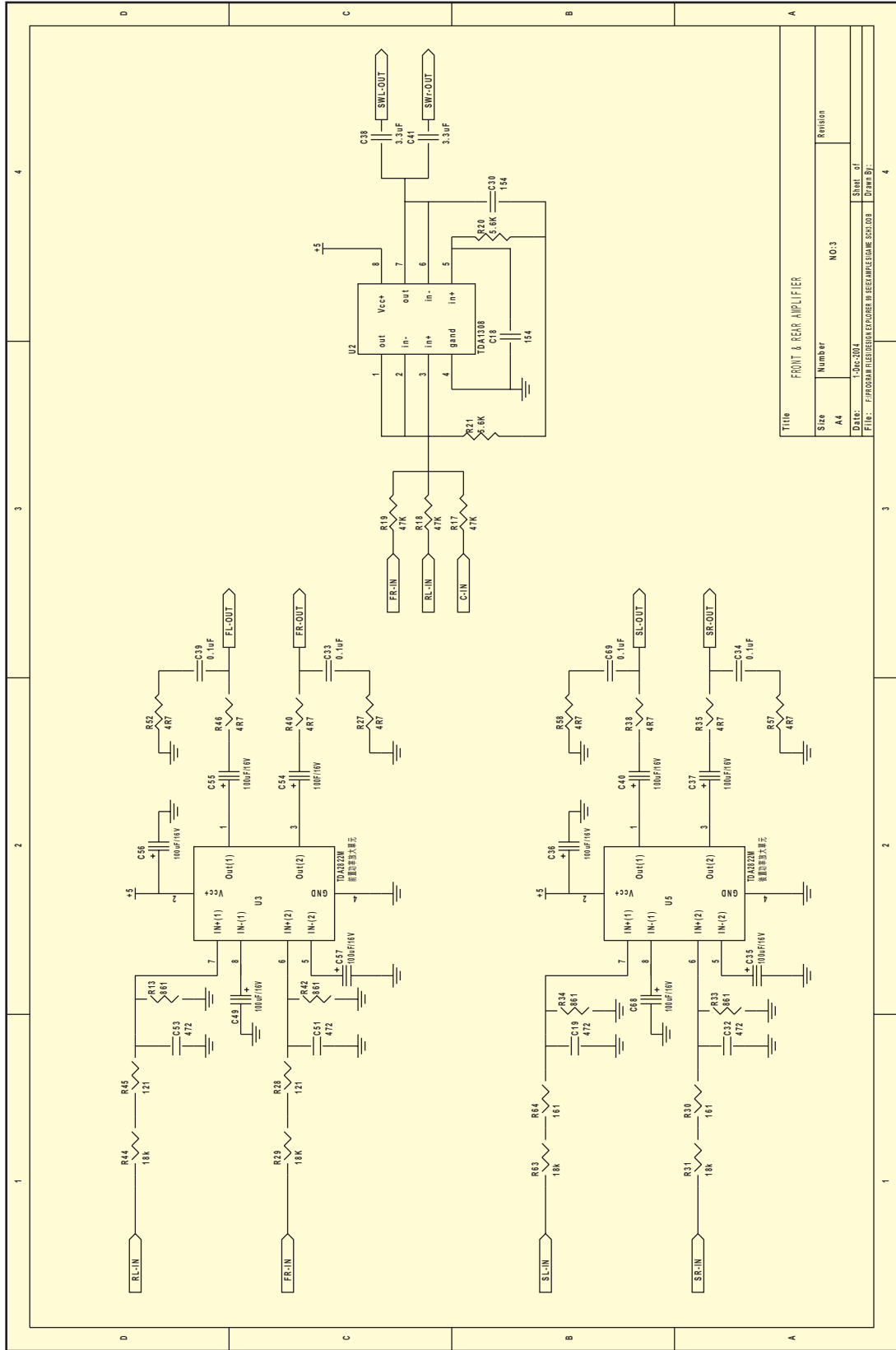
電路圖



Title		CPS.1-GAME Q57785	
Size	Number	Revision	
A4	N.01		
DATE:	1.04.2014	STATE:	1
FILE:	PROGRAM TELEVISION FOR CURRENT MEMBERS OF THE ECUH DOB	DRAWN BY:	4



Title		TDA2822M AMPLIFIER FOR CENTER & BASS	
Size	Number	Revision	
A4	NO.2		
Date:	1-Dec-2004	Sheet of	4
File: P:\PROGRAM FILES\DESIGN EXPLORER IN SEEMING\ELCAME SCH.DDB		Drawn By:	



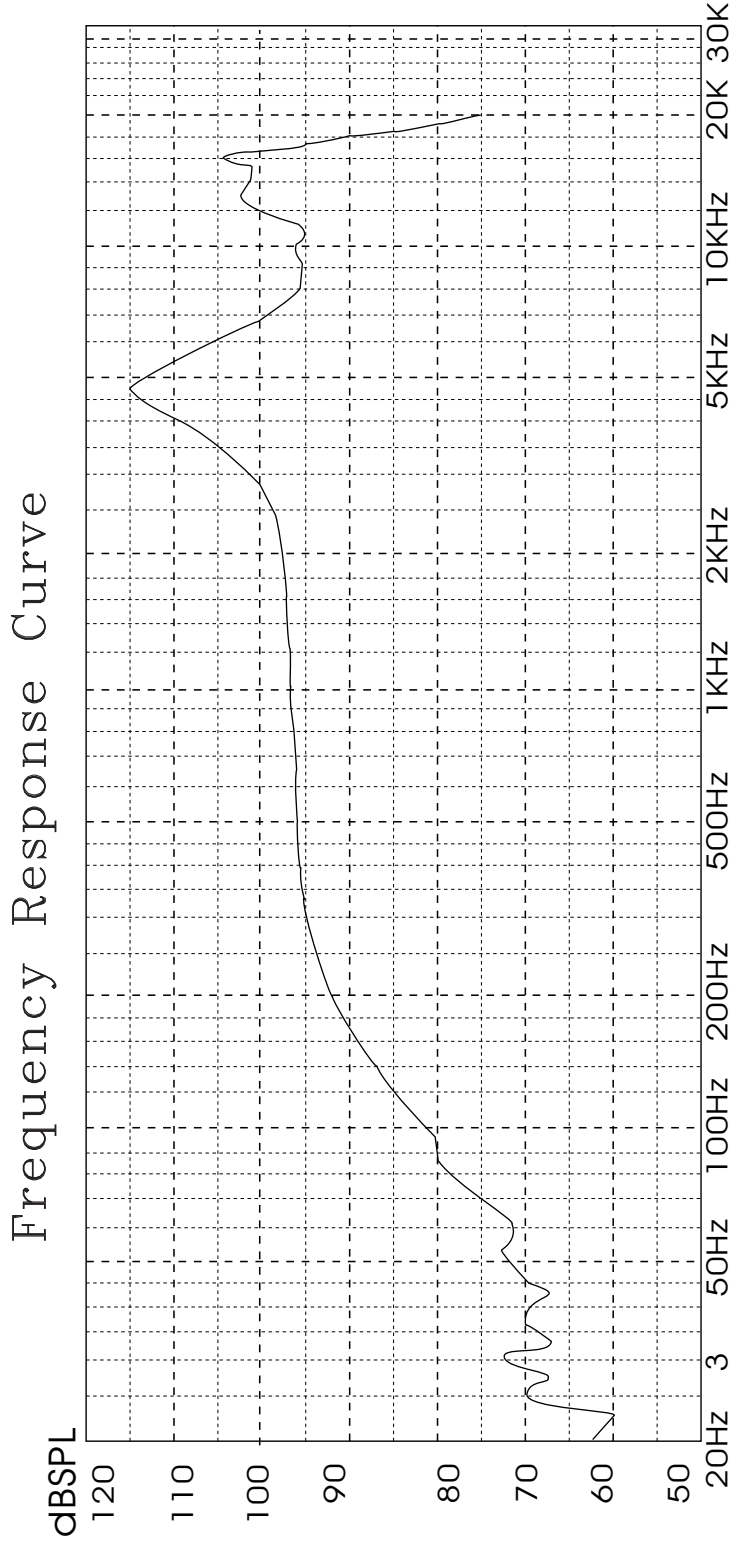
Title			
Size	Number	NO.3	Revision
A4			
DATE:	1.04.2014	SWR-01	
FILE:	PROGRAMMER/PROFESSOR/01/BEELAMP/SCHEM/001.DWG	Drawn By:	

Acoustic Characteristic 音響特性

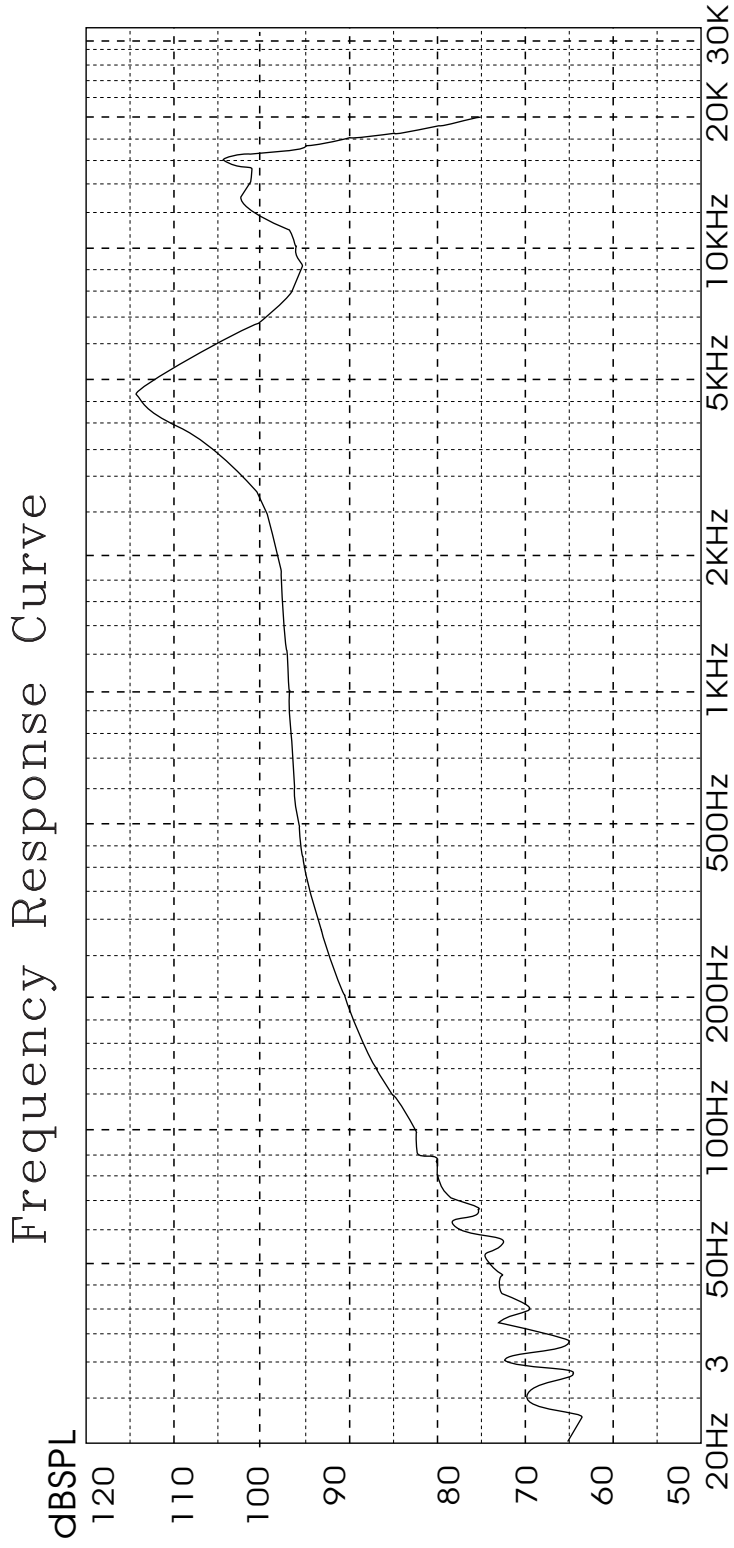
	Characteristic	Front Speaker	Rear Speaker	Center Speaker	Bass Speaker
1.	Frequency Range	20Hz~20kHz	20Hz~20kHz	20Hz~20kHz	20Hz~3kHz
2.	Sensitivity	97± 3dB	97± 3dB	97± 3dB	121± 3dB
3.	Speaker Type & Size	∅27mm Dynamic	∅27mm Dynamic	∅27mm Dynamic	∅30mm Dynamic
4.	Normal Impedance	32Ω	32Ω	16Ω	24Ω
5.	Output Power	150mW	150mW	100mW	15mW (max 100mW)

Speaker
Frequency Response
頻率響應圖

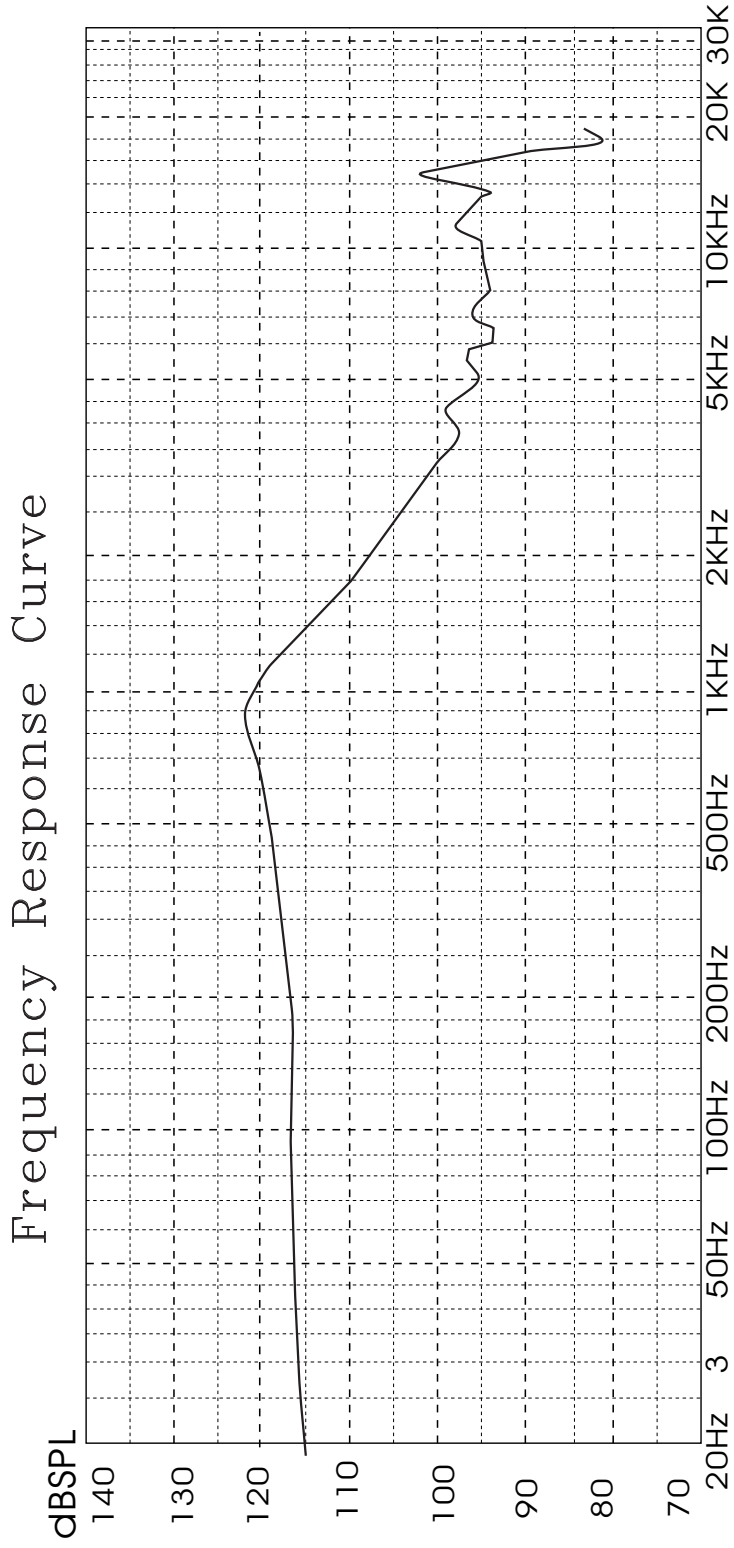
Speaker: **Front & Rear** Model: CP5.1 GAME
Voltage applied for F.R.: 0.178V
Measure distance: 0.01m



Speaker: **Center** Model: CP5.1 GAME
Voltage applied for F.R.=0.126V
Measure distance: 0.01m



Speaker:**Bass** Model:CP5.1 GAME
Voltage applied for F.R.=0.155V
Measure distance:0.01m



Electrical Characteristics 電氣特性

Characteristic

1.	電源電壓 Supply Voltage	DC5V
2.	靜態消耗電流 Quiescent Drain Current	≤ 0.1 A
3.	最大消耗電流 Max Drain Current	≤ 1.3 A
4.	總諧波失真 Total Hharmonic Distortion	$\leq 5\%$
5.	動態範圍 Dynamic Range	100dB
6.	平衡度 Channel Unbalance	≥ 2 dB
7.	分離度 Separation	≤ 100 dB
8.	信噪比 S/N	85dB
8.	阻尼係數 Damping Factor	20

**Packaging
包裝**

FRONT VIEW



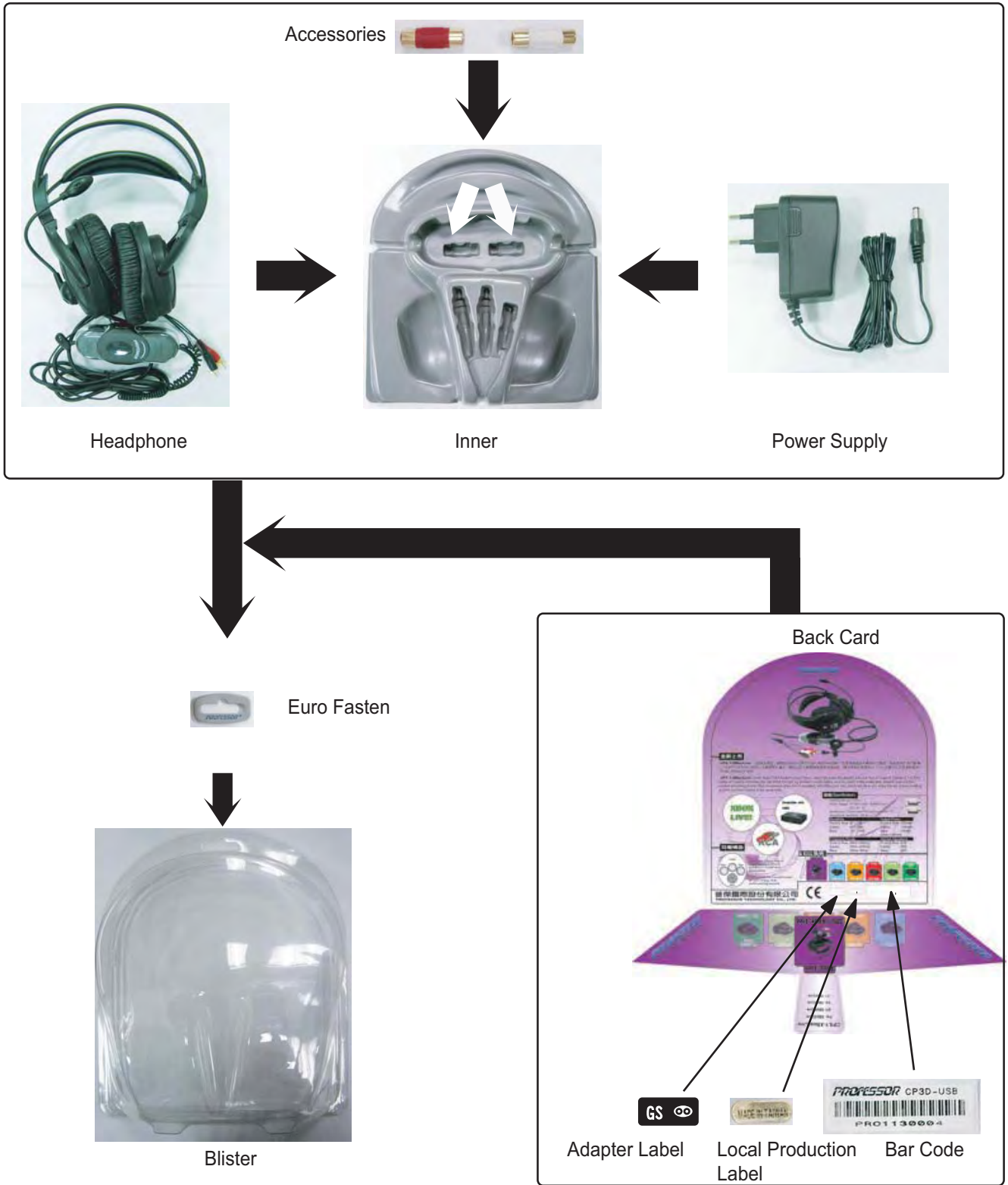
BACK VIEW



Side View



Packaging Construction 包裝方法示意圖



Carton Packaging Construction 外箱包裝

