



普傑國際股份有限公司

PROFESSOR TECHNOLOGY CO., LTD.

## PRODUCT SPECIFICATION

產品承認書

Customer: \_\_\_\_\_

Product Name: Indoor Glass mount GSM Antenna

Model No: CP67

Production Region: TAIWAN

Version: English

Customer Approval Stamp.

Date: \_\_\_ / \_\_\_ / \_\_\_.

Contact Info: Jimmy Chan  
+886-3-4551081 ext:209  
jack@professor.com.tw  
jimmychan@professor.com.tw

Model No:

CP67

Date:

19/DEC/2006

Checked by:

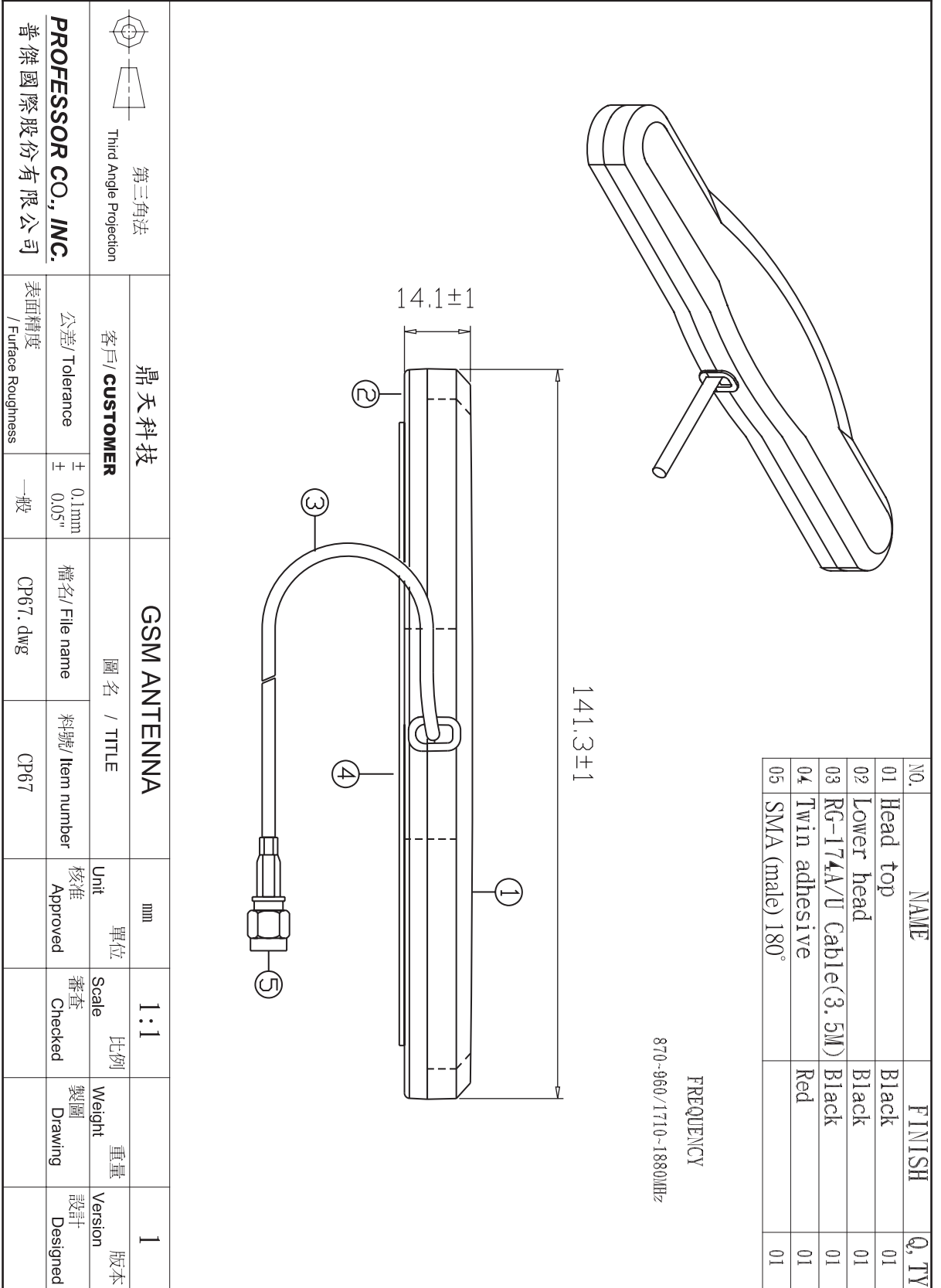
Approved by:

**PROFESSOR TECHNOLOGY CO., LTD.**

5F, No.25-1, JiLin Rd., Chung-Li Industrial Park, Taoyuan 320, Taiwan.

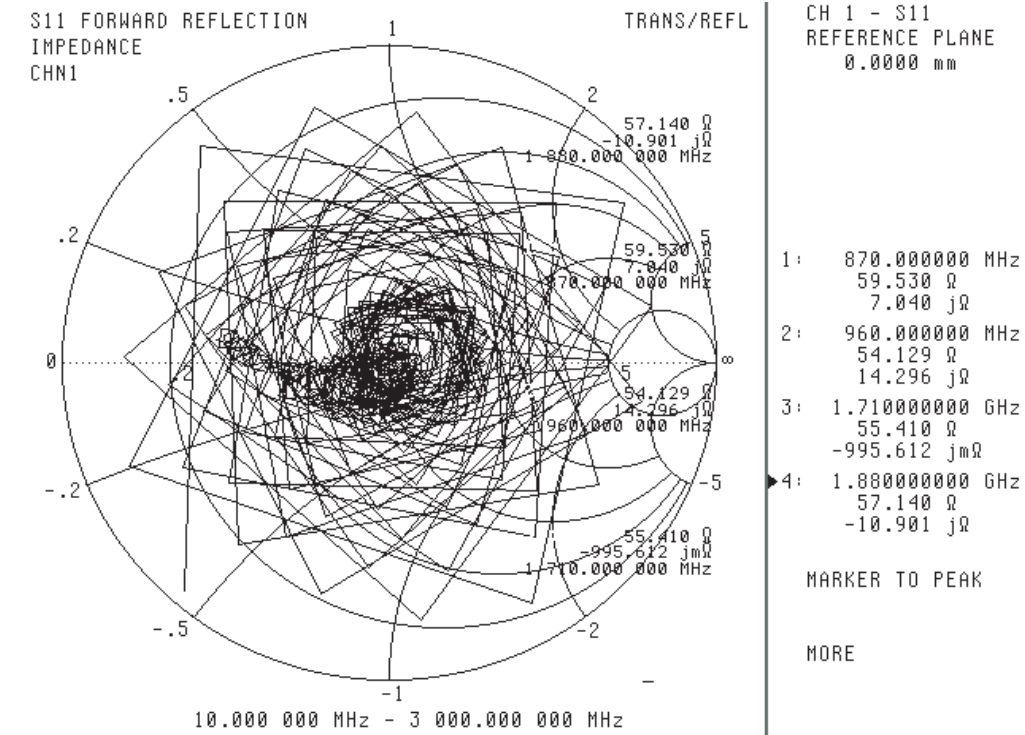
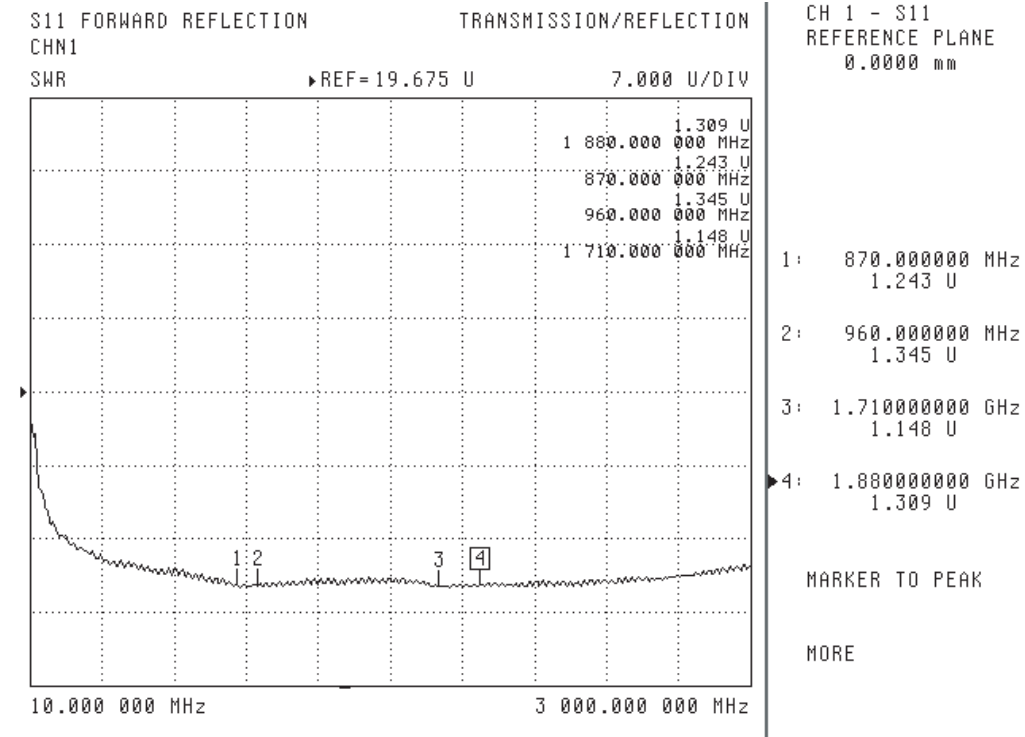
TEL :+886-3-4551081 FAX :+886-3-4553913

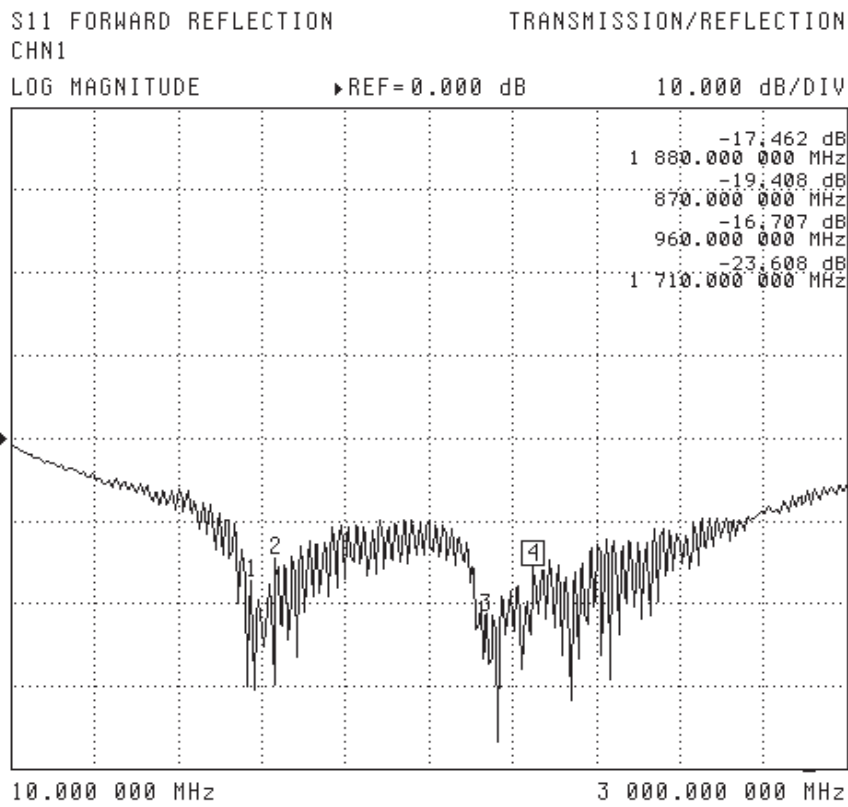
**OUTLAY**  
外觀圖



 Third Angle Projection 第三角法	鼎天科技		GSM ANTENNA		mm	1:1	1
	客戶 / CUSTOMER	圖名 / TITLE	單位	比例	重量	版本	
公差 / Tolerance	檔名 / File name	料號 / Item number	核准	審查	製圖	設計	
表面精度 / Surface Roughness	CP67.dwg	CP67	Approved	Checked	Drawing	Designed	
	± 0.1mm ± 0.05"		一般				
PROFESSOR CO., INC.							
普傑國際股份有限公司							

# Antenna Pattern 測試圖





- OUTPUT DEVICE
- ▶PRINTER
- PLOTTER
- DISK FILE
- RETURN