



普傑國際股份有限公司

PROFESSOR TECHNOLOGY CO., LTD.

## PRODUCT SPECIFICATION

產品承認書

Customer: \_\_\_\_\_

Product Name: GPRS Antenna

Model No: CP62

Production Region:

Version: English

Customer Approval Stamp.

Date: \_\_\_ / \_\_\_ / \_\_\_.

Contact Info: Jimmy Chan  
+886-3-4551081 ext:209  
jack@professor.com.tw  
jimmychan@professor.com.tw

Model No:

CP62

Date:

08/Jul/2005

Checked by:

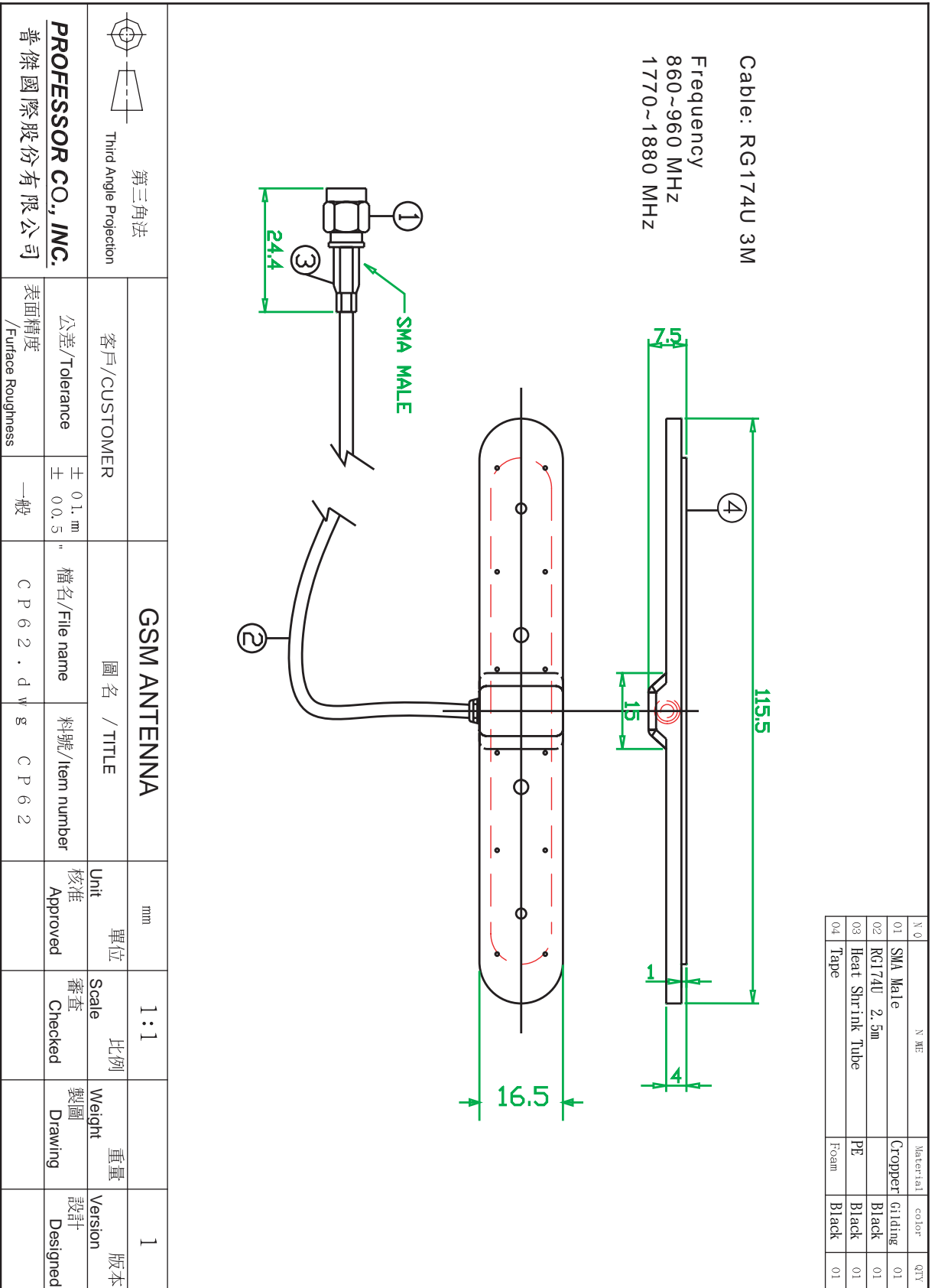
Approved by:

**PROFESSOR TECHNOLOGY CO., LTD.**

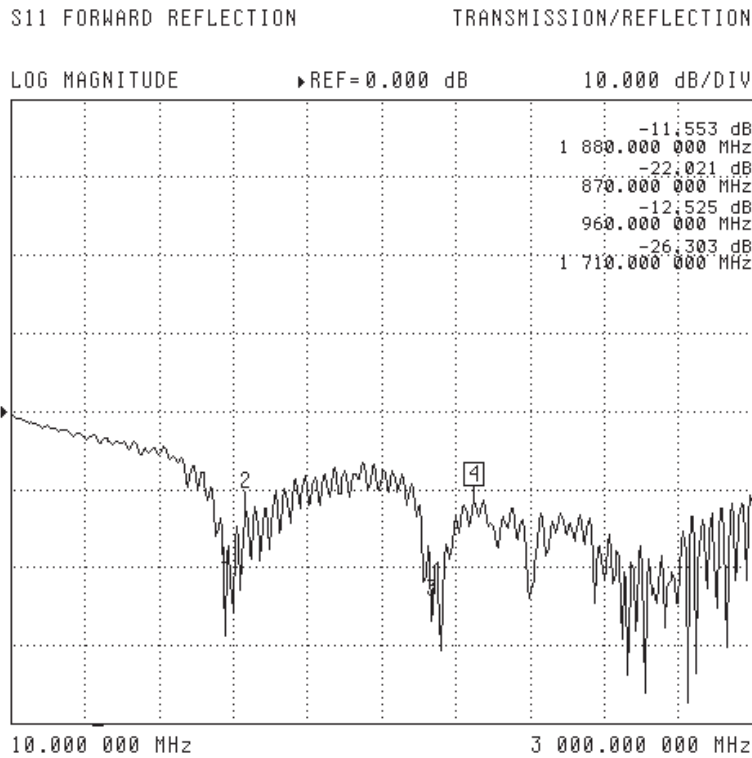
5F, No.25-1, JiLin Rd., Chung-Li Industrial Park, Taoyuan 320, Taiwan.

TEL :+886-3-4551081 FAX :+886-3-4553913

**OUTLAY**  
外觀圖



# Antenna Pattern 測試圖



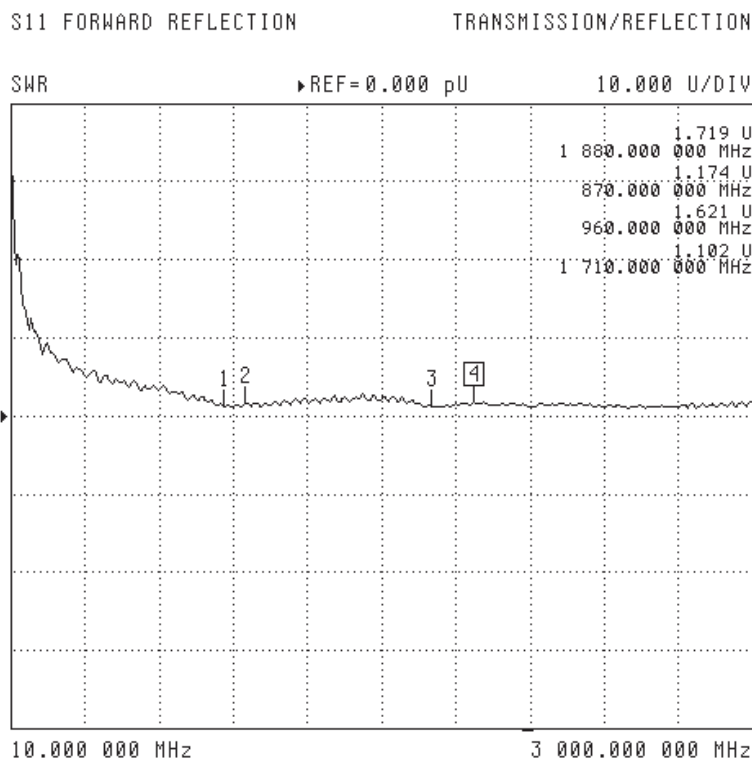
OUTPUT DEVICE

PRINTER

PLOTTER

▶DISK FILE

RETURN

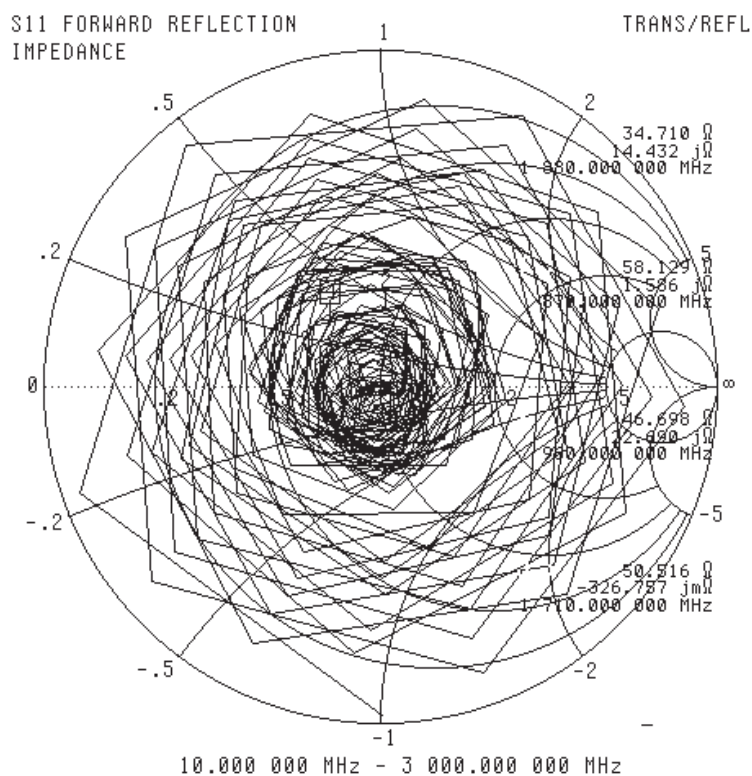


CH 1 - S11  
REFERENCE PLANE  
0.0000 mm

- 1: 870.000000 MHz  
1.174 U
- 2: 960.000000 MHz  
1.621 U
- 3: 1.71000000 GHz  
1.102 U
- ▶4: 1.88000000 GHz  
1.719 U

MARKER TO PEAK

MORE



CH 1 - S11  
 REFERENCE PLANE  
 0.0000 mm

- 1: 870.000000 MHz  
 58.129 Ω  
 1.586 jΩ
- 2: 960.000000 MHz  
 46.698 Ω  
 22.690 jΩ
- 3: 1.710000000 GHz  
 50.516 Ω  
 -326.757 jΩ
- 4: 1.880000000 GHz  
 34.710 Ω  
 14.432 jΩ

MARKER TO PEAK

MORE